



Maritime Container Services Pty Limited

ABN 69 001 169 240

MCS COOKS RIVER INTERMODAL RAIL TERMINAL REDEVELOPMENT

MCS is undertaking major redevelopment works, which includes the resurfacing of some of the terminals main roadways, an upgrade to the site drainage network, installation of new light towers and modifications and extensions to rail sidings.

The works will be undertaken in staged manner across our terminal in order to minimise the impact on operations and ensure business continues as usual.

The first stage of works commencing on Monday the 6th February 2012, will be the closure of 9 road to all traffic both road and rail for up to 8 weeks.

Please find attached our site map indicating our new traffic flow, enter as normal 6 road, turn right at stop sign travel through survey area turn right, running parallel to the old 9 road. Please note do not drive down 6 road passed the stop sign heading south, there is no entry into 9 road and no room to turn back down 6 road.

Should you have any operational issues, the following MCS personnel can be contacted with your concerns.

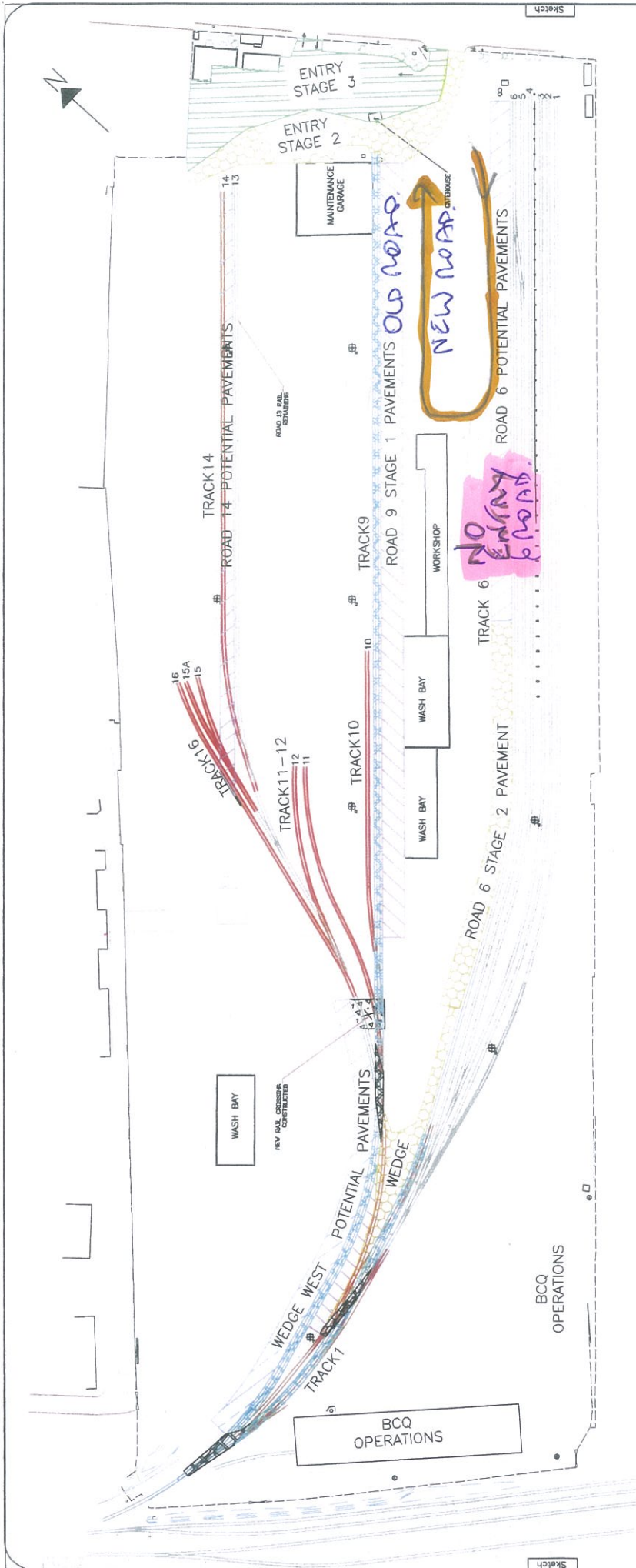
- **John Hull – Terminal Manager – 0417497765**
- **Bernie Miles – Terminal Supervisor – 0408165045**
- **Sam Nastasi – Night Terminal Supervisor – 0402853351**

All correspondence to P.O. Box 615, Mascot 1460

CORPORATE OFFICE
20 Canal Road
St Peters NSW
Phone 131 627
Fax (02) 8512 8930

MCS TRANSPORT
20 Canal Road
St Peters NSW
Phone 131 627
Fax (02) 9516 3233

MCS PARK No. 1
9-13 McPherson St
Banksmeadow NSW
Phone 131 627
Fax (02) 9516 3233







- STAGE 1 - ROAD 9 PAVEMENTS
- STAGE 2 - HALF ENTRY, ROAD 6 & WEDGE PAVEMENT
- STAGE 3 - REMAINING HALF ENTRY PAVEMENT (CONSTRUCTION COMMENCING AFTER COMPLETION OF FIRST HALF ENTRY)

- POTENTIAL PAVEMENT CONSTRUCTION (LIKELY TO BE ONE OF THESE THREE AREAS)
- NEW RAIL FOUNDATIONS CONSTRUCTED

- RELOCATED/NEW RAIL SIDING
- DEMOLISHED RAIL SIDING
- EXISTING RAIL SIDING

PRELIMINARY

CLIENT					DESIGNED CW DRAWN CW SCALE 1:2000 ALL DIMENSIONS IN mm	DATE 24/01/12 CHECKED APPROVED C.A.D. FILE P110527-SK6-02 SIZE A3	DATE PROJECT 24/01/12	PROJECT MARITIME CONTAINER SERVICES COOKS RIVER RAIL TERMINAL REDEVELOPMENT WORK AREAS	DRAWING NUMBER SHEET NUMBER 1 OF 1 P110527-SK6-02	REVISION DATE 24 JANUARY 2012
					ENDSTATE www.endstate.com.au	ENDSTATE Pty. Ltd	ENDSTATE Pty. Ltd	ENDSTATE Pty. Ltd	ENDSTATE Pty. Ltd	ENDSTATE Pty. Ltd